

Nocturne

LISEL MUELLER

110

♩ = 40c.

330

111

Alto Fl.

Perc.

TOM-TOMS

ffff

37 CON-down 38

Synth.

ff *mf*

*) sounds a 5th higher plus an octave lower than written pitch

Vn.1

Vn.2 DIV.

Va. DIV.

Vc.

Cb.

pp *poco mp* *pp* *poco mp* *pp* *poco mp*

pizz. *mp*

port. *p < mf > p* *p < mf > p* *p < mf > p*

pp *poco mp* *pp* *poco mp* *pp* *poco mp*

pizz. *mp*

port. *p < mf > p* *p < mf > p* *p < mf > p*

pp *poco mp* *pp* *poco mp* *pp* *poco mp*

pp *poco mp* *pp* *poco mp* *pp* *poco mp*

113

355

Fl.1

Alto Fl.

Ob.1

Bs. Cl.

Synth.

Bar. solo

- nign: the soo - thing back - ground mu - sic of rain, or an owl's throa - ty sig - nal. Dread of a wail - ing si - ren, or the

Vn.1 DIV.

Vn.2

Va.

Vc. DIV.

Cb.

mp *p* *p* *mf* *mf* *f*

poco mf *pp* *SOLO* *GLI ALTRI* *ppp* *mf* *pp*

pp *mf* *pp*

pp *mf* *pp*

pp *mf* *pp*

pp *mf* *pp*

pp *mf* *pp*

pp *mf* *pp*

361

Fl.1

Alto Fl.

Bs. Cl.

Synth.

Bar. solo

te - le - phone, which at this hour could on - ly bring me a thick de - men - ted voice, or the im - per - son - al speech iss - u - ing from some desk of di - sas - ter. Last night, when it

Vn.2

Va.

Vc. DIV.

Cb.

p *poco mf* *p* *poco mf* *p* *poco mf* *mf*

poco *mp* *mp*

p *p* *p*

(UNIS.)

114

362

363

Timp. *p* *freely* *p*

Perc. SNARE DR. *pp* *freely* *p* *p*

Synth.

Bar. solo *poco*
 came, it was a sound of bless-ing, the rough and tum-ble bump-ing to-ge-ther of freight cars in the switch-yard down the road— that sim-ple, art-less

Vn.2 *mp*

Vc. UNIS. *mp* DIV. *pp*

1 *pizz. freely* *mp*

Cb. SOLI 2 *pizz. freely* *mp*

115

365

Fl.1 *pp* *fp* *pp*

Alto Fl. *pp* *fp* *pp*

Ob.1 *mp* *fp*

Bs. Cl. *pp* *fp*

Synth. *mf* *f* *ff* *f*

Bar. solo *mp* *p*
 coup-ling, and a long time la-ter, the drawn-out, low-voiced hum of the train roll-ing down the sin-gle track. Sounds of work, of

1 *TUTTI DIV.* *mp* *fp* *ppp*

2 *DIV.* *mp* *fp*

Va. (DIV.) *mp* *fp*

Vc. (DIV. a 2) *pp* *fp*

Cb. *TUTTI DIV. arco* *pp* *fp*

117

♩ = 104c. steady

384 remove mouthpiece a 3 *)

Tpts. mf

Tbns. mf *) blow air through mouthpiece—making a focused steamy hissing sound

Perc. SNARE DR. pp

Synth.

Bar. solo dark - ness throbbled with a dream of a - rri - val.

Va. DIV.

Vc. DIV. DIV. a 4 UNIS. DIV. UNIS. DIV. UNIS. DIV. UNIS. p

Cb. (DIV.)



390 con sord. >

Hns. p

Tpts.

Tbns.

Perc. SIZZLE CYM. SNARE DR. pp sempre l.v.

Vn.2 UNIS. mp

Va. DIV. 1,2 3 3,4 p p p p p p p p p p p p p p p p

Vc. DIV. UNIS. DIV. UNIS. DIV. UNIS. DIV. UNIS. DIV. UNIS. p

118

396

Fl.1

Alto Fl.

Hns.

Tpts.

Tbns.

Perc.

SIZZLE CYM.

SNARE DR.

Synth.

mf

39

1

2

3

4

5

6

Chor. C

*) members of Chorus C enter one at a time—quiet, mysterious; each singer performs the following sequence:

- i) whisper "natureless, futureless" slowly
- ii) brief pause
- iii) whisper "nameless, natureless, futureless" quickly
- iv) longer pause

repeat i) – iv) until cut-off sign

1

2

Vn.

Va. DIV.

Vc.

DIV. UNIS.

UNIS.

mp

p

401

Fl.1

Alto Fl.

Hns.

Tpts.

Tbns.

Timp.

Perc.

SYZZLE CYM.

SNARE DR.

Synth.

Sop. solo

Bar. solo

mf

Per - haps the

mf

Per - haps the

A

1

2

3

B

4

5

6

Chor.

1-6

7

8

C

9

10

11

12

see page 192

see page 192

see page 192

see page 192

see page 192

see page 192

remaining members of Chorus C continue to enter, one by one, on each quarter-note beat

1

Vn.

2

Va. DIV.

DIV. UNIS.

Vc.

Cb.

(DIV.) pizz.

p

405

Fl. 1 nat. flt. 3 nat. flt. 3 nat. flt. 3 nat. flt. 3 nat. flt. 3 nat. flt. 3 nat. flt. 3 nat. flt. 3

Alto Fl. nat. flt. 3 nat. flt. 3 nat. flt. 3 nat. flt. 3 nat. flt. 3 nat. flt. 3 nat. flt. 3 nat. flt. 3

Hns. *p*

Tpts.

Tbns.

Timp.

Perc. SIZZLE CYM. SNARE DR.

Synth.

Sop. solo u - ni - verse will end one day and all the life in it. If the u - ni - verse stops ex - pand - ing

Bar. solo u - ni - verse will end one day and all the life in it. If the u - ni - verse ex - pands for e - ver, it will sur - vive for an in - fi - nite

A u - ni - verse will end one day and all the life in it. If the u - ni - verse ex - pands for e - ver, it will sur - vive for an in - fi - nite

1-6

7 see page 192

8 see page 192

Chor. B 9 see page 192

10 see page 192

11 see page 192

12 see page 192

remaining members of Chorus B continue to enter, one by one, on each quarter-note beat

1 Vn.

2 Vn.

Va. DIV. *p*

Vc. DIV. UNIS.

Cb. (DIV.)

409

Fl. 1 nat. flt. 3 nat. flt. 3 nat. flt. 3 nat. flt. 3 nat. flt. 3 nat. flt. 3 nat. flt. 3 nat.

Alto Fl. nat. flt. 3 nat. flt. 3 nat. flt. 3 nat. flt. 3 nat. flt. 3 nat. flt. 3 nat. flt. 3 nat.

Ob. 1, 2 *mp* *poco* *mp*

E.Hn. *mp* *poco* *mp*

Bs. Cl. *mp* *poco* *mp*

Hns. *p*

Tpts.

Tbns.

Timp.

Perc. SIZZLE CYM. SNARE DR. *cresc. poco a poco*

Synth.

Sop. solo and be - gins to con - tract,

Bar. solo pe-riod of time. E - ven-tual-ly all the ma-te - ri - al in all the ge - ne - rations of stars will be ex - haust - ed, and the u - ni - verse will grow cold and dark.

A and be - gins to con - tract, pe-riod of time. E - ven-tual-ly all the ma-te - ri - al in all the ge - ne - rations of stars will be ex - haust - ed, and the u - ni - verse will grow cold and dark.

Chor. B C *cresc. poco a poco*

Vn. 1 *cresc. poco a poco*

Vn. 2 *cresc. poco a poco*

Va. DIV. *p* *p* *p* *p* *p* *p* *cresc. poco a poco*

Vc. DIV. UNIS. *p* *p* *p* *p* *p* *p* *cresc. poco a poco*

Cb. (DIV.) *cresc. poco a poco*

120

413

Fl.1

Alto Fl.

Ob.1,2

E.Hn.

Bs. Cl.

1

Bn.

2

Hns.

Tpts.

Tbns.

Timp.

Perc.

SIZZLE CYM.

SNARE DR.

Synth.

Sop. solo

Bar. solo

A

Chor.

B

C

1

Vn.

2

Va. DIV.

Vc.

Cb.

fit. *nat.* *fit.* *nat.* *fit.* *nat.* *fit.* *nat.* *fit.* *nat.* *fit.* *nat.*

3 *3* *3* *3* *3* *3* *3* *3* *3* *3* *3* *3*

poco *poco* *poco* *mp* *mf* *mp* *mf*

mp *cresc. poco a poco* *sim.* *6* *3* *3* *6* *3* *3* *6* *3* *3* *6*

cresc. poco a poco *sim.* *6* *3* *3* *6* *3* *3* *6* *3* *3* *6*

cresc. poco a poco

mf *mf*

it will grow hot-ter and bright-er un - til it im-plodes and is crushed out of ex - is - tence. May - be this Big

it will grow hot-ter and bright-er un til it im-plodes and is crushed out of ex is - tence. May - be this Big

mf *cresc. poco a poco*

DIV. UNIS. *DIV. UNIS.* *DIV. UNIS.* *DIV. UNIS.*

(DIV.)

417

Fl.1

Alto Fl.

Ob.1,2

E.Hn.

Bs. Cl.

Bns.

Hns.

Tpts.

Tbns.

Timp.

Perc.

SIZZLE CYM.

SNARE DR.

Synth.

Sop. solo

Bar. solo

A

Chor.

B

C

f

1 Vn.

2 Vn.

Va. DIV.

Vc.

Cb.

ft. nat. ft. nat. ft. nat. ft. nat. ft. nat. ft. nat. ft. nat. ft. nat.

ft. 3 nat. ft. 3 nat. ft. 3 nat. ft. 3 nat. ft. 3 nat. ft. 3 nat. ft. 3 nat.

mp *mf* *mp* *mf*

3 3 6 3 3 6 3 3 6 3 3 6

Crunch will not be the end. Per - haps a - no - ther Big Bang will fol - low, and an - other new u - ni - verse.

Per - haps a - no - ther Big Bang will fol - low, and an - other new u - ni - verse.

Crunch will not be the end. Per - haps a - no - ther Big Bang will fol - low, and an - other new u - ni - verse.

Per - haps a - no - ther Big Bang will fol - low, and an - other new u - ni - verse.

DIV. UNIS. (DIV.)

121

Fl. 1

Alto Fl.

Ob. 1, 2

E. Hn.

Bs. Cl.

Bns.

Hns.

Tpts.

Tbns.

Timp.

Perc.

Synth.

Chor.

1

2

3

4

5

6

B

7

8

9

10

11

12

C

* remaining members of Chorus B stop singing, one by one, on each quarter-note beat
*) sing right up to cut-off sign

1

Vn.

2

Va. DIV.

Vc.

Cb.

DIV. UNIS.

(DIV.)

dim. poco a poco

425

Bns. *mfp* *p*

Hns.

Tpts.

Tbns.

Timp.

Perc. SIZZLE CYM. SNARE DR.

Synth.

Sop. solo *f*

Bar. solo *f*

all the world, all the

1 name-less

2 name-less

3 name-less

4 name-less

Chor. C 5 name-less

6 name-less

7 name-less

8

9

all others

Vn.2

Va. DIV.

Vc. DIV. UNIS. (DIV.)

Cb.

122

430

Timp. *p*

Perc. SNARE DR. *p* *pochiss.* *ppp*

40

Synth. *mp*

Sop. solo *mf* *mp*
world, all the world, all

Bar. solo *mf* *mp*
world, all the world, all

Chor. C
8 name-less
9 name-less
10 name-less
11 name-less
12 name-less remaining members of Chorus C stop whispering, one by one, on each quarter-note beat

Vn.2 *p*

Cb. (DIV.) *p*

123

438

The score includes parts for Fl.1, Alto Fl., Ob.1,2, E.Hn., Bs. Cl., Bns., Hns., Tpts., Tbns., Perc., Synth., Sop. solo, Bar. solo, Vn.1, Vn.2, Va., Vc., and Cb. The woodwinds and strings play a melodic line starting at measure 438, marked with *sfz*. The brass section has instructions to "replace mouthpiece" and play "senza sord.". The vocal soloists sing "the world." with a long note. The strings play a similar melodic line, marked with *p*, *mf*, and *gliss.* at the end. The percussion part is marked "TAM-TAM".

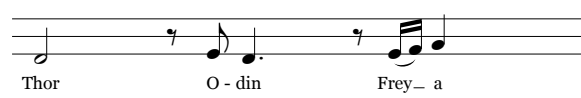
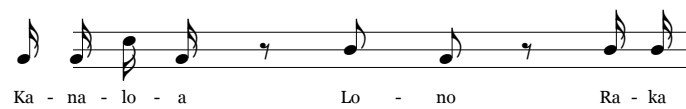
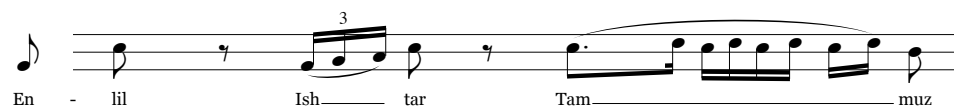
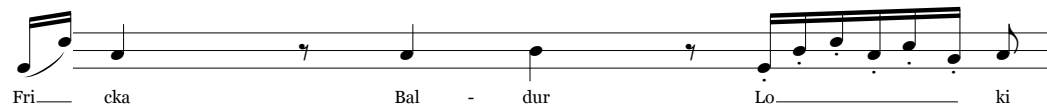
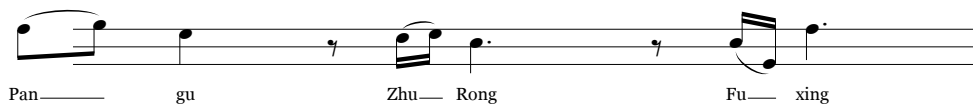
41

members of Chorus B enter one at a time;
bravura, incantatory—varying the dynamics

each singer performs the following sequence:

- i) sing any one of the following cells
(a cell consists of three deity names)
- ii) pause
- iii) sing another cell
- vi) pause

continue alternating your first cell with any other
cell, always separating them with a pause



Empty musical staves for practice or recording.